

Ref.: BWRL/2024-25/SE/Misc./10**Date: 05th August, 2024**

To,
National Stock Exchange of India Ltd.
Exchange Plaza, C-1, Block G,
Bandra Kurla Complex,
Bandra (E), Mumbai – 400 051.
NSE Symbol: BHARATWIRE

BSE Limited
Phiroze Jeejeebhoy Towers,
Dalal Street,
Mumbai – 400 001.
BSE Scrip Code: 539799

Dear Sir/Ma'am,

Subject: Regulation 30 – Investor Presentation – Q1-FY 2024-25

Pursuant to the regulation 30 of Securities and Exchange Board of India (Listing Obligations and Disclosure Requirements) Regulation, 2015 the Investor Presentation of our Company is attached herewith. The same has also been placed on the website of the Company i.e. www.bharatwireropes.com.

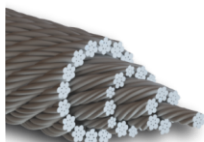
Request you to kindly take this communication on record.

Thanking you,

Yours Faithfully

For **Bharat Wire Ropes Limited**

Govinda Soni
Company Secretary and Compliance Officer
Memb. No.: F12937

Encl: as above**Corporate Office:**

A - 701, Trade World Bldg., Kamala Mills,
SB Marg, Lower Parel (W),
Mumbai - 400013, Maharashtra, India.
Tel: +91 22 66824600

Factory:

Plot No-1&4, Atgaon Industrial Complex,
Mumbai-Nasik Highway, Atgaon (East),
Taluka-Shahpur, Dist.-Thane- 421601,
Maharashtra, India.
Tel No.: +91 2527 240123/240124/240197

Registered Office & Factory:

Plot No.4, MIDC, Chalisgaon,
Village Khadki – BK, Taluka Chalisgaon,
District Jalgaon - 424 101,
Maharashtra, India

• Website: www.bharatwireropes.com • E-mail: info@bharatwireropes.com • CIN : L27200MH1986PLC040468

Bharat Wire Ropes Ltd.

“Engineering Excellence”



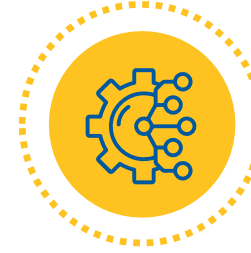
BWR

BHARAT WIRE ROPES LTD.

One of the largest manufacturer of Steel Wire Ropes in India



Manufacturing capability of Steel Wires, Strands, Slings and Wire Ropes with over thousands of varieties



Management with combined experience of over three decades



Integrated state-of-the-art wire rope plants with a Total Manufacturing Capacity of 72,000 MTPA



Diverse industry applications including Oil & Gas, Infrastructure, Mining and many more



Employing over 1,000 people



Strong Customer Base



Latest Technologies like high speed Stranding Machine, Zero liquid discharge facilities from Germany, U.K. and Korea



Products being Exported to 55+ countries



3 year CAGR
Revenues: 35%
EBITDA: 72%

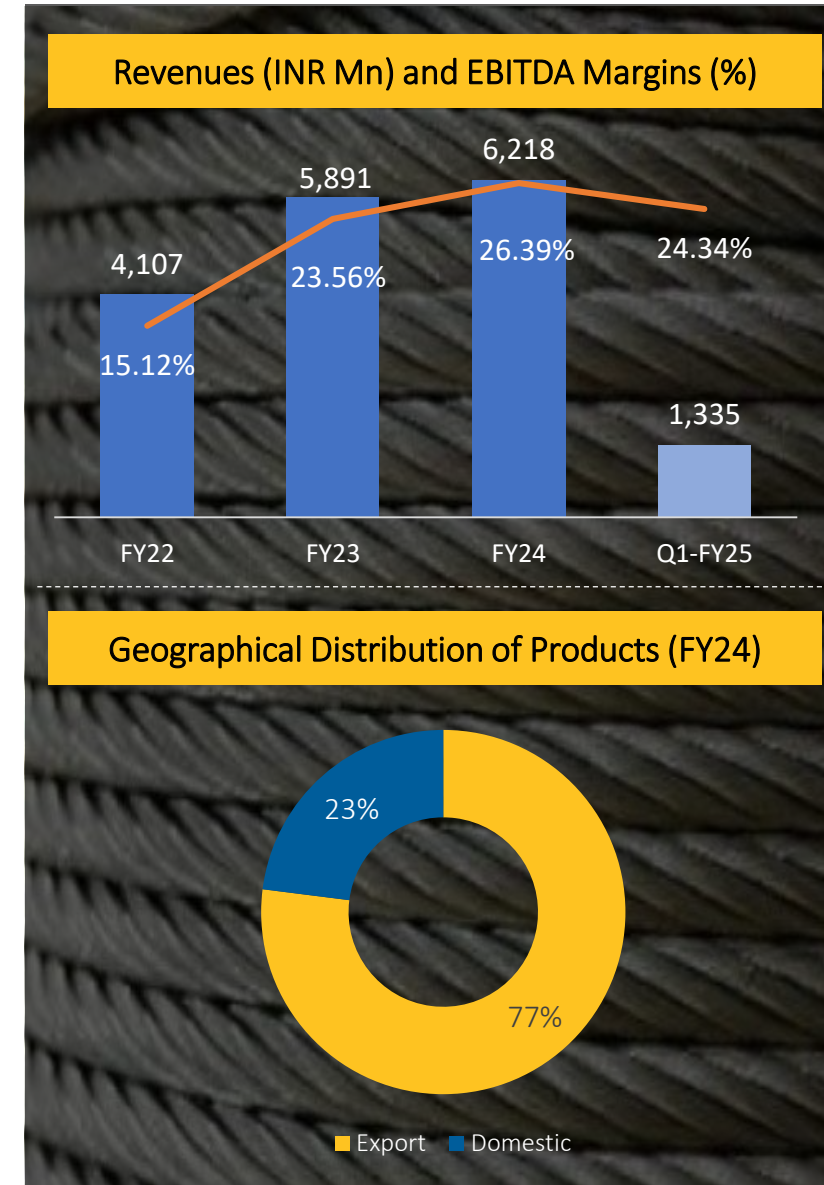



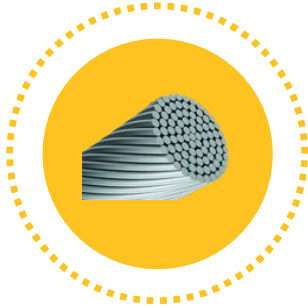
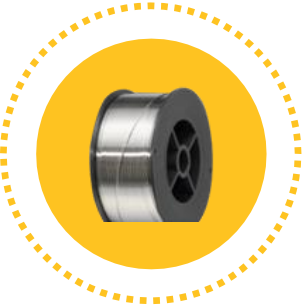


Company Overview



- Bharat Wire Ropes Limited (“BWR”) was originally incorporated in the year 1986, and later in 2010, it was acquired by Mr. M L Mittal, current promoter and managing director. The company is headquartered in Mumbai, Maharashtra.
- The company has two manufacturing plants, one in Atgaon, Maharashtra, with a capacity of 6,000 MTPA and one in Chalisgaon, Maharashtra with a capacity of 66,000 MTPA.
- BWR is one of the leading manufacturer of specialty steel wire, steel wire ropes, slings & strands, with over thousands of varieties of products.
- The Company has the capability of manufacturing wire ropes ranging from 6 mm to 100 mm and Steel Wire ranges from 0.3 mm to 5.5 mm.
- The wide range of products meet the functional needs of a vast array of industrial applications such as General Engineering, Aviation, Fishing, Elevators, Cranes, Material Handling, Onshore/ Offshore Oil Exploration, Ports & Shipping and Mining.
- BWR products are being exported to over 55+ Countries including Australia, Middle East, Nepal, New Zealand, UK, US, Singapore, South Africa, Vietnam and many more.
- The company caters to government, semi-government organizations, private organizations and also multi-national companies.



	Wire Ropes	Strands	Slings	Steel Wire
				
Description	6-100 MM of various construction like 6*19, 6*36, 8*19, 35*7 etc.	Stay Wire, Structural Strands and Earth Wire	Mechanically Spliced, Hand Spliced, Spelter Sockets and Swaged Sockets	High carbon steel wires ranging from 0.3mm to 5.5 mm upto 2,360 N/mm ²
End Application	General Engineering, Structural, Oil & offshore, Elevator, Mining, Road Safety, Cranes etc.	Electrification, Haulage, Earthing, Structural Supports and Steel Fencing	An Important piece of rigging hardware used in lifting and hoisting operations and are commonly used across different industries	Cutting Tools, Springs, High Strength Wire, Wire Ropes etc.

Applications



Oil & Gas



Cranes



Mining



Offshore



Marine



Elevator



Structural

Ship Mooring



Roof Structure Ropes



Industrial Cranes



Speed Arresters



Transmission Tower



Industrial Cranes



Offshore Cranes



Suspension Bridge Ropes



Elevator Ropes



Dragline Drag & Hoist



Trawl Warps



Mobile Lattice Boom Cranes



Product Presence in 55+ countries across the Globe



Catering to a wider customer base on account of its diversified product offering

Efforts been made to focus on productivity and occupy the maximum number of machines with large order quantity

Debt restructuring completed

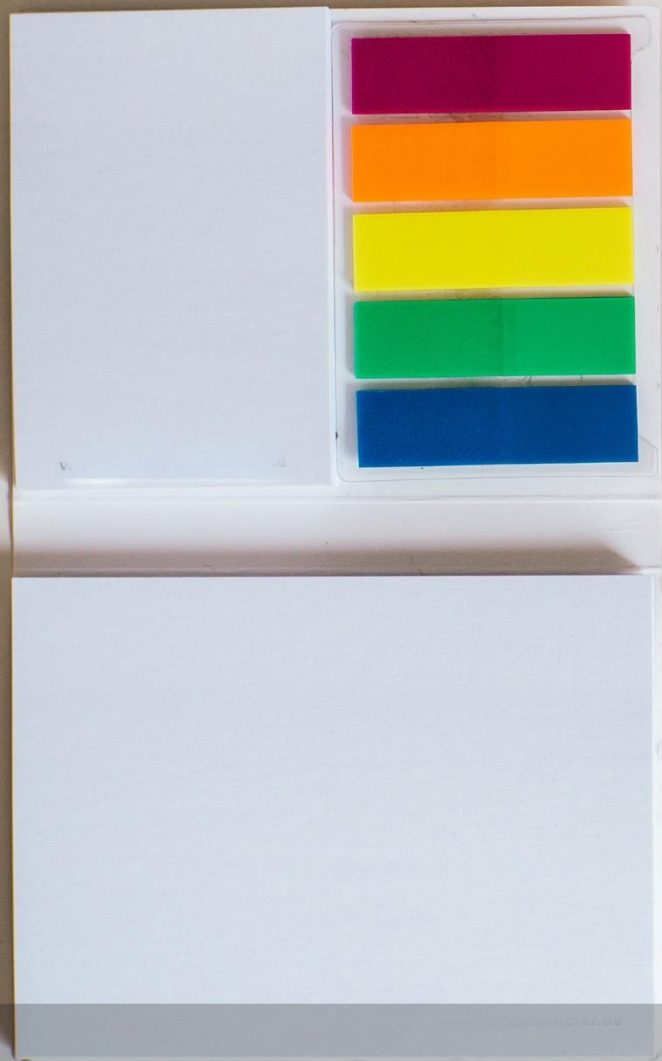
Close proximity to ports allows easy access to export markets



Industrial Promotion Subsidy equivalent to 100% of eligible investments as per SGST for a maximum of INR 4,350 Mn, of which disbursements has already began

Electricity Duty exemption for 15 years

Focused on Minimum wastage, Less material holding cost, and fast delivery of products



Financial Overview

Q1-FY25 Financial Performance

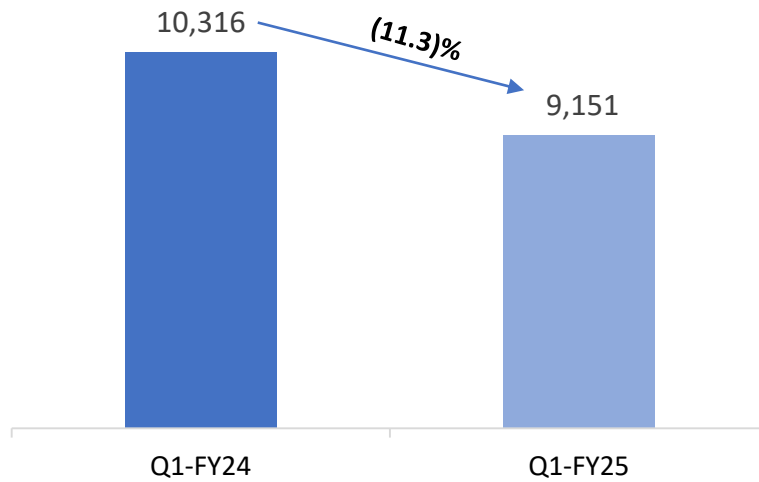
Revenue from Operations INR 1,335 Mn <i>(15.7)% YoY</i>	EBITDA INR 325 Mn <i>(21.1)% YoY</i>	EBITDA Margins 24.34% <i>(167)Bps</i>
PAT INR 181 Mn <i>(23.6)% YoY</i>	PAT Margins 13.56% <i>(140)Bps</i>	Diluted EPS INR 2.65/Share <i>(24.1)% YoY</i>

Operational Highlights:

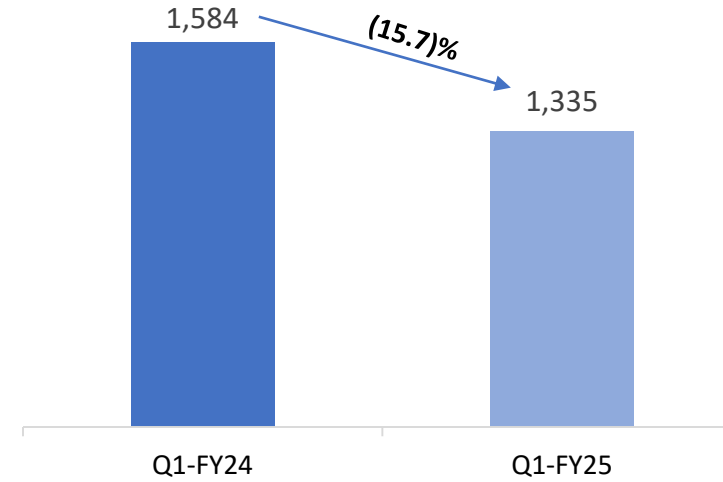
- Geopolitical disturbances in Red Sea has adversely affected supply chain system for international supplies resulting into reduction of sales volumes.
- In spite of reduction in volumes, the company has been able to maintain profitability ratio at healthy levels on account of continued focus on higher value added products, cost controls, operational efficiency.

Key Operational Highlights – Q1-FY25

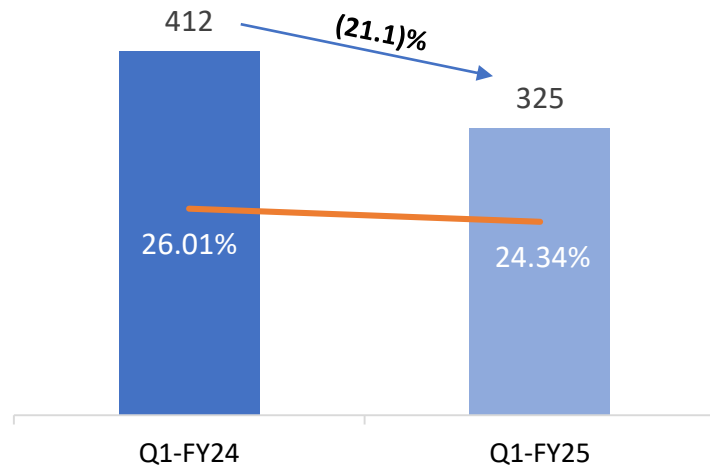
Volume (In MT)



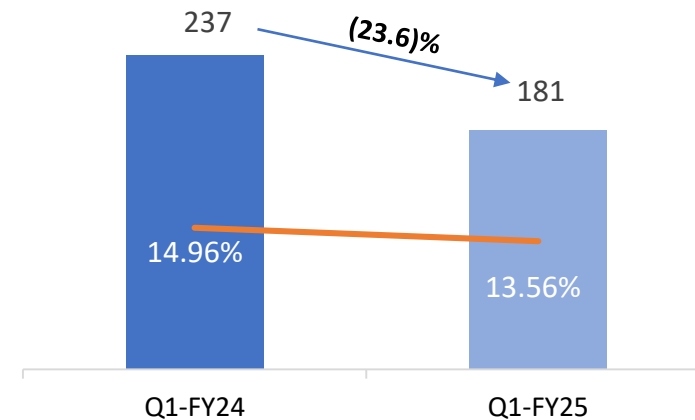
Operational Revenue (INR Mn)



EBITDA (INR Mn) & EBITDA Margin (%)



PAT (INR Mn) & PAT Margins (%)



Quarterly Financial Performance



Particulars (INR Mn)	Q1-FY25	Q1-FY24	Y-o-Y	Q4-FY24	Q-o-Q
Revenue from Operations	1,335	1,584	(15.7)%	1,472	(9.3)%
Total Expenses	1,010	1,172	(13.8)%	1,099	(8.1)%
EBIDTA	325	412	(21.1)%	373	(12.9)%
<i>EBIDTA Margins (%)</i>	<i>24.34%</i>	<i>26.01%</i>	<i>(167) Bps</i>	<i>25.34%</i>	<i>(100) Bps</i>
Depreciation and amortisation expenses	53	53	0.0%	53	0.0%
Finance costs	32	41	(22.0)%	36	(11.1)%
Other Income	3	2	50.0%	2	50.0%
PBT	243	320	(24.1)%	286	(15.0)%
Tax	62	83	(25.3)%	68	(8.8)%
PAT	181	237	(23.6)%	218	(17.0)%
<i>PAT Margins (%)</i>	<i>13.56%</i>	<i>14.96%</i>	<i>(140) Bps</i>	<i>14.81%</i>	<i>(125) Bps</i>
Other Comprehensive Income	0	0	NA	-3	NA
Total Comprehensive Income	181	237	(23.6)%	215	(15.8)%
Diluted EPS	2.65	3.49	(24.1)%	3.21	(17.4)%

Historical Income Statement



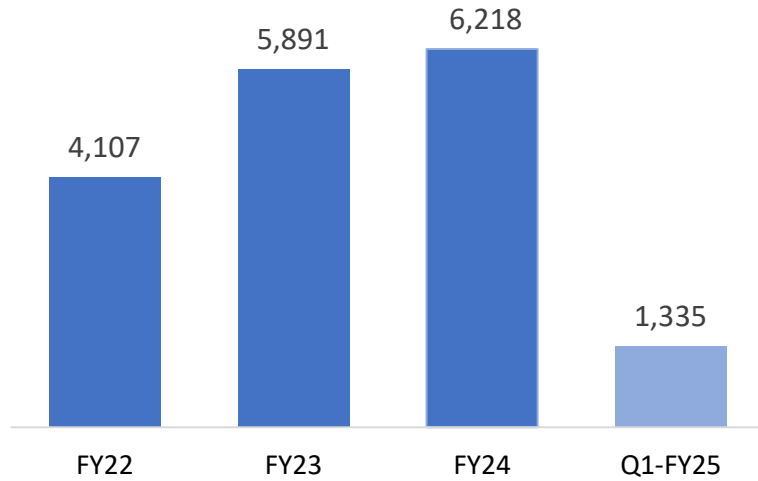
Particulars (INR Mn)	FY24	FY23	FY22
Revenue from Operations	6,218	5,891	4,107
Total Expenses	4,577	4,503	3,486
EBIDTA	1,641	1,388	621
<i>EBIDTA Margins (%)</i>	<i>26.39%</i>	<i>23.56%</i>	<i>15.12%</i>
Depreciation and amortisation expenses	212	207	214
Finance costs	148	222	234
Other Income	8	7	6
Profit Before Share Of Loss Of Associates	1,289	966	179
Share Of Loss Of Associates	1	-	-
PBT	1,288	966	179
Tax	326	344	42
PAT	962	622	137
<i>PAT Margins (%)</i>	<i>15.47%</i>	<i>10.56%</i>	<i>3.34%</i>
Other Comprehensive Income	3	19	(2)
Total Comprehensive Income	959	641	135
Diluted EPS	14.15	9.68	2.17

Historical Balance Sheet

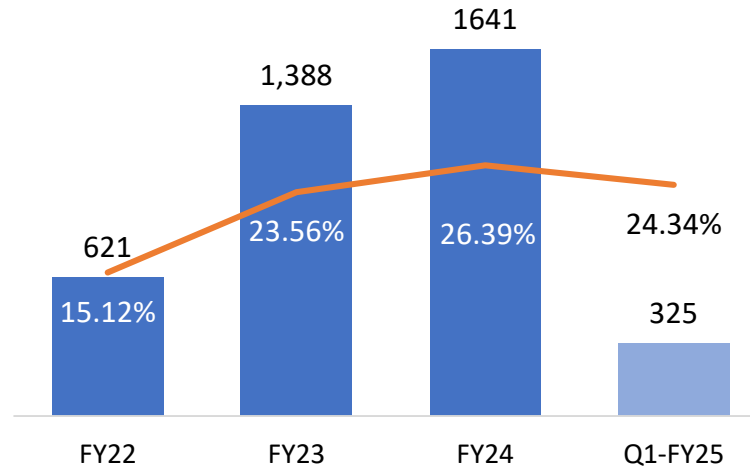


Particulars (INR Mn)	FY24	FY23	FY22	Particulars (INR Mn)	FY24	FY23	FY22
Equity	6,606	5,602	4,517	Non-Current Assets	4,842	5,069	5,583
(a) Equity Share Capital	680	679	638	(a) Property, Plant and Equipment	4,750	4,809	4,915
(b) Other Equity	5,926	4,923	3,879	(b) Capital Work in Progress	123	31	1
Non-Current Liabilities	1,123	1,492	2,123	(c) Other Intangible Assets	3	3	-
(a) Financial Liabilities				(d) Intangible Assets under Development	5	4	3
(i) Borrowings	1,048	1,427	2,065	(e) Investment & Other Financial Assets	42	44	98
(ii) Other Financial Liabilities	37	37	33	(f) Deferred Tax Assets (Net)	(182)	142	480
(b) Provisions	38	28	25	(g) Other Non-Current Assets	101	36	86
Current Liabilities	441	718	1,098	Current Assets	3,328	2,743	2,155
(a) Financial Liabilities				(a) Inventories	986	1,101	805
(i) Borrowings	275	390	623	(i) Trade Receivables	792	477	399
(ii) Trade Payables	59	178	313	(ii) Cash and Cash Equivalentents	1	0	29
(iii) Other Financial Liabilities	1	1	2	(iii) Other Bank Balances	83	87	3
(b) Other Current Liabilities	99	144	155	(iv) Other Financial Assets	11	9	10
(c) Provision	7	5	5	(c) Other Current Assets	1,455	1,069	909
TOTAL EQUITY AND LIABILITIES	8,170	7,812	7,738	TOTAL ASSETS	8,170	7,812	7,738

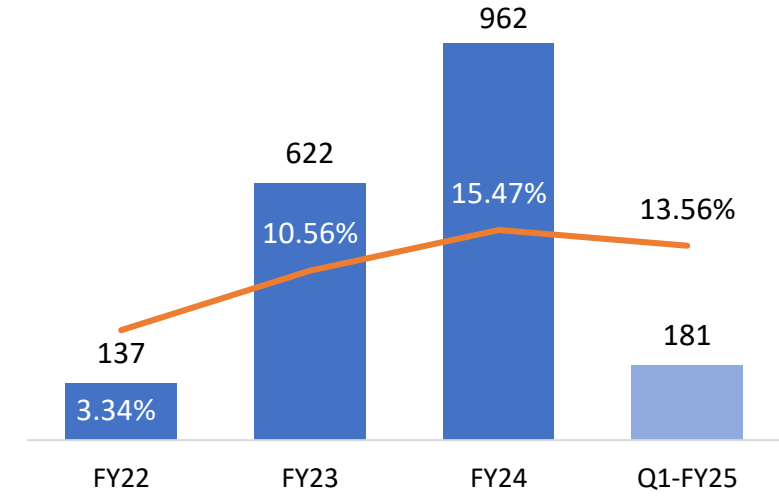
Operational Revenue (INR Mn)



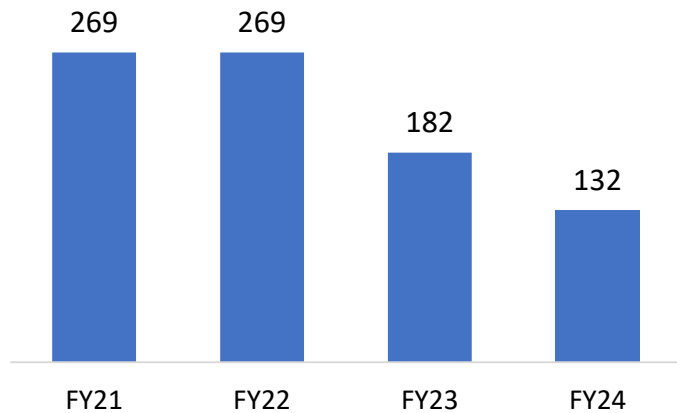
EBITDA (INR Mn) & EBITDA Margin (%)



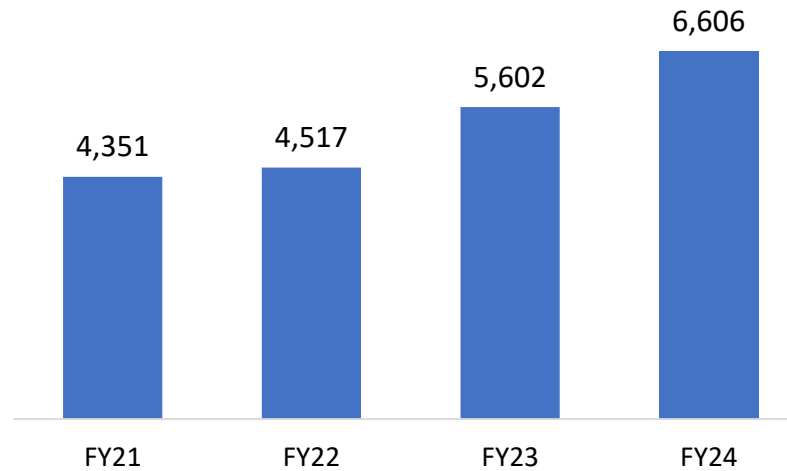
PAT (INR Mn) & PAT Margins (%)



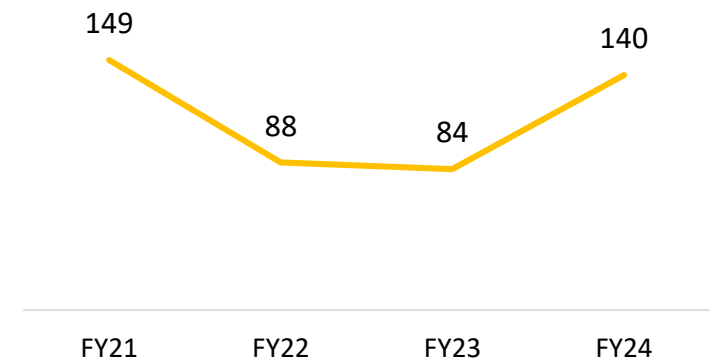
Total Debt Profile



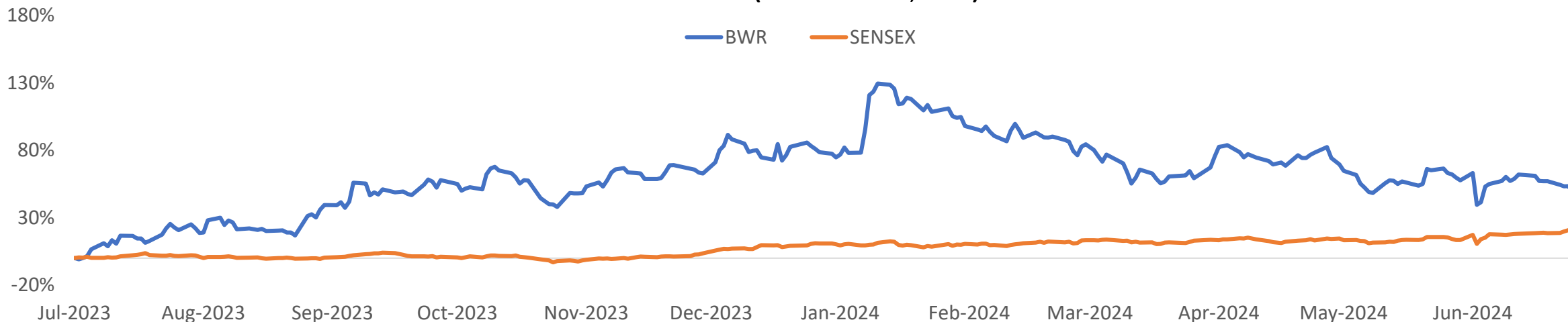
Net Worth (INR Mn)



Cash Conversion Days

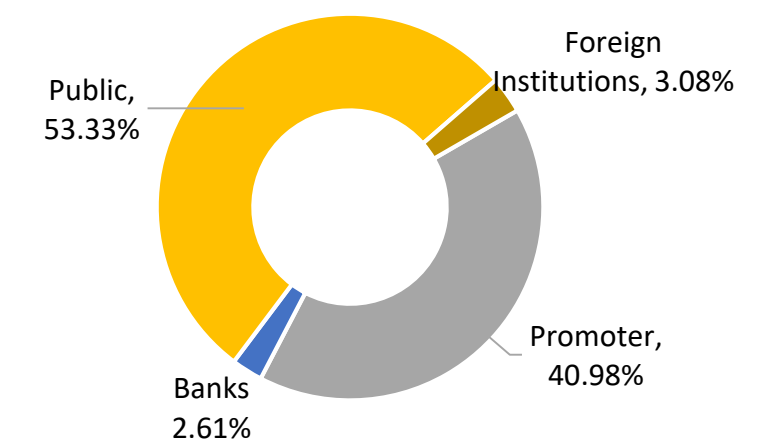


Stock Price (As on 30th June, 2024)



Price Data (As on 30 th June, 2024)	INR
Face Value	10.0
CMP	257.6
52 Week H/L	401.9/171.0
Market Cap (INR Mn)	17,606.9
Shares O/S (Mn)	68.4
Avg. Vol. ('000)	459.1

Shareholding Pattern (As on 30th June, 2024)



*No representation or warranty, express or implied, is made as to, and no reliance should be placed on, the fairness, accuracy, completeness or correctness of the information or opinions contained in this presentation. Such information and opinions are in all events not current after the date of this presentation. Certain statements made in this presentation may not be based on historical information or facts and may be "forward looking statements" based on the currently held beliefs and assumptions of the management of **Bharat Wire Ropes Limited ("Company" or "BWR")**, which are expressed in good faith and in their opinion reasonable, including those relating to the Company's general business plans and strategy, its future financial condition and growth prospects and future developments in its industry and its competitive and regulatory environment.*

Forward-looking statements involve known and unknown risks, uncertainties and other factors, which may cause the actual results, financial condition, performance or achievements of the Company or industry results to differ materially from the results, financial condition, performance or achievements expressed or implied by such forward-looking statements, including future changes or developments in the Company's business, its competitive environment and political, economic, legal and social conditions. Further, past performance is not necessarily indicative of future results. Given these risks, uncertainties and other factors, viewers of this presentation are cautioned not to place undue reliance on these forward-looking statements. The Company disclaims any obligation to update these forward-looking statements to reflect future events or developments.

This presentation is for general information purposes only, without regard to any specific objectives, financial situations or informational needs of any particular person. This presentation does not constitute an offer or invitation to purchase or subscribe for any securities in any jurisdiction, including the United States. No part of it should form the basis of or be relied upon in connection with any investment decision or any contract or commitment to purchase or subscribe for any securities. None of our securities may be offered or sold in the United States, without registration under the U.S. Securities Act of 1933, as amended, or pursuant to an exemption from registration there from.

This presentation is confidential and may not be copied or disseminated, in whole or in part, and in any manner.

Valorem Advisors Disclaimer:

Valorem Advisors is an Independent Investor Relations Management Service company. This Presentation has been prepared by Valorem Advisors based on information and data which the Company considers reliable, but Valorem Advisors and the Company makes no representation or warranty, express or implied, whatsoever, and no reliance shall be placed on, the truth, accuracy, completeness, fairness and reasonableness of the contents of this Presentation. This Presentation may not be all inclusive and may not contain all of the information that you may consider material. Any liability in respect of the contents of, or any omission from, this Presentation is expressly excluded. Valorem Advisors also hereby certifies that the directors or employees of Valorem Advisors do not own any stock in personal or company capacity of the Company under review.

For further information please contact our Investor Relations Representatives:



Valorem Advisors
Mr. Anuj Sonpal, CEO
Tel: +91-22-49039500
Email: bwr@valoremadvisors.com



Thank You